

# WORKFACE PLANNING AN INSIDERS VIEW

**Are we there yet?**

# JEPH VIRTUE

## WFP THE EARLY DAYS

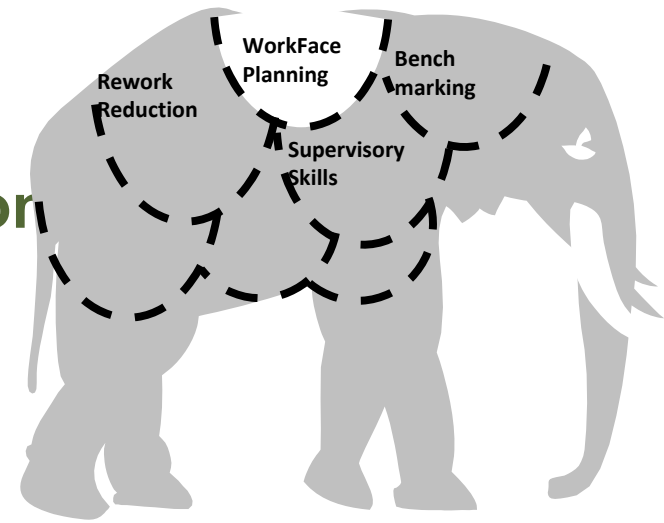
# COAA Best Practices

- **Four themes**

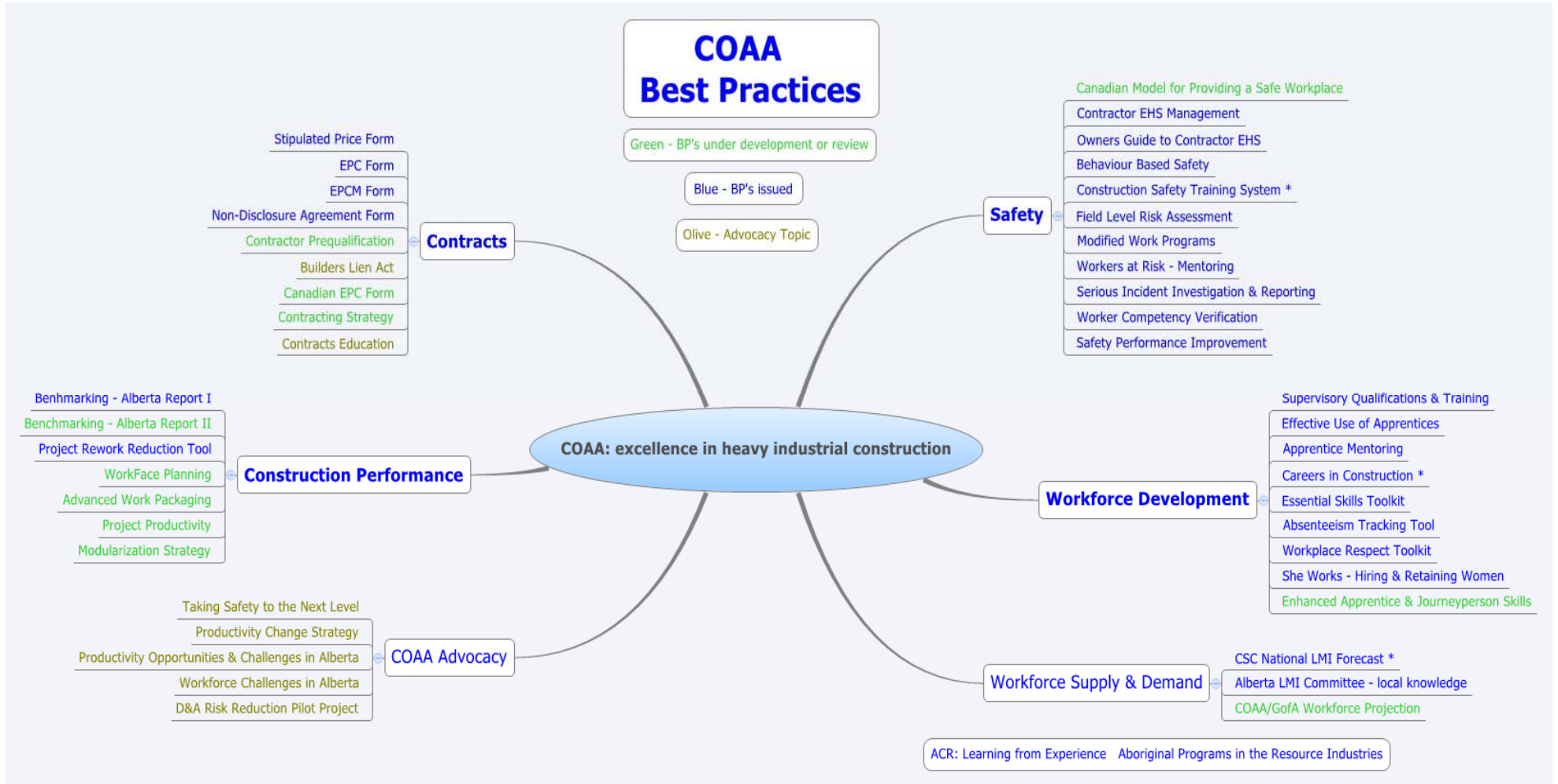
- **Safety**
- **Workforce Development**
- **Construction Performance**
- **Contracts**

+ **Supply/Demand Projection**

+ **Advocacy**



# COAA Best Practices



# Construction Performance

- **Benchmarking - Alberta Report I** with CII
- **Benchmarking - Alberta Report II** with CII + UofC
- **Project Rework Reduction Tool**
- **WorkFace Planning**
- **Advanced Work Packaging** with CII
- **Project Productivity**
- **Modularization Strategy** with ASM
- **Aligning Engineering and Construction** with CII

**News  
Flash!**

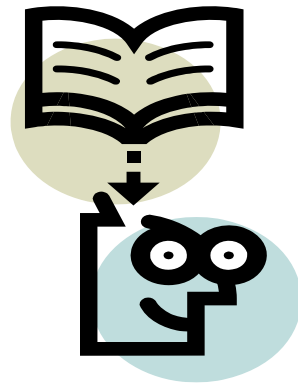
# Board Advocacy

- **Industry Leaders Roundtable – September 2013**
- **Productivity Opportunities and Challenges in Alberta – May 2012**
- **Workforce Challenges in Alberta – May 2011**

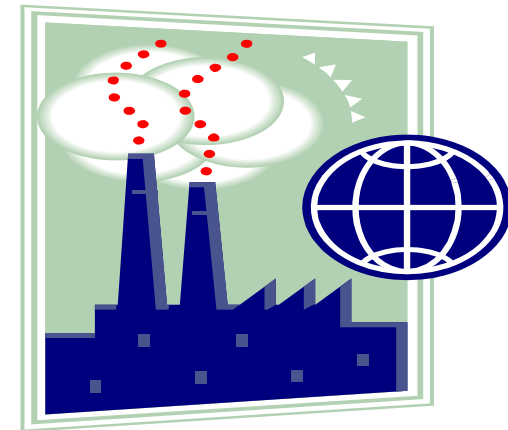
Strategic  
“Push”



# Next Steps



Tactical  
"Pull"



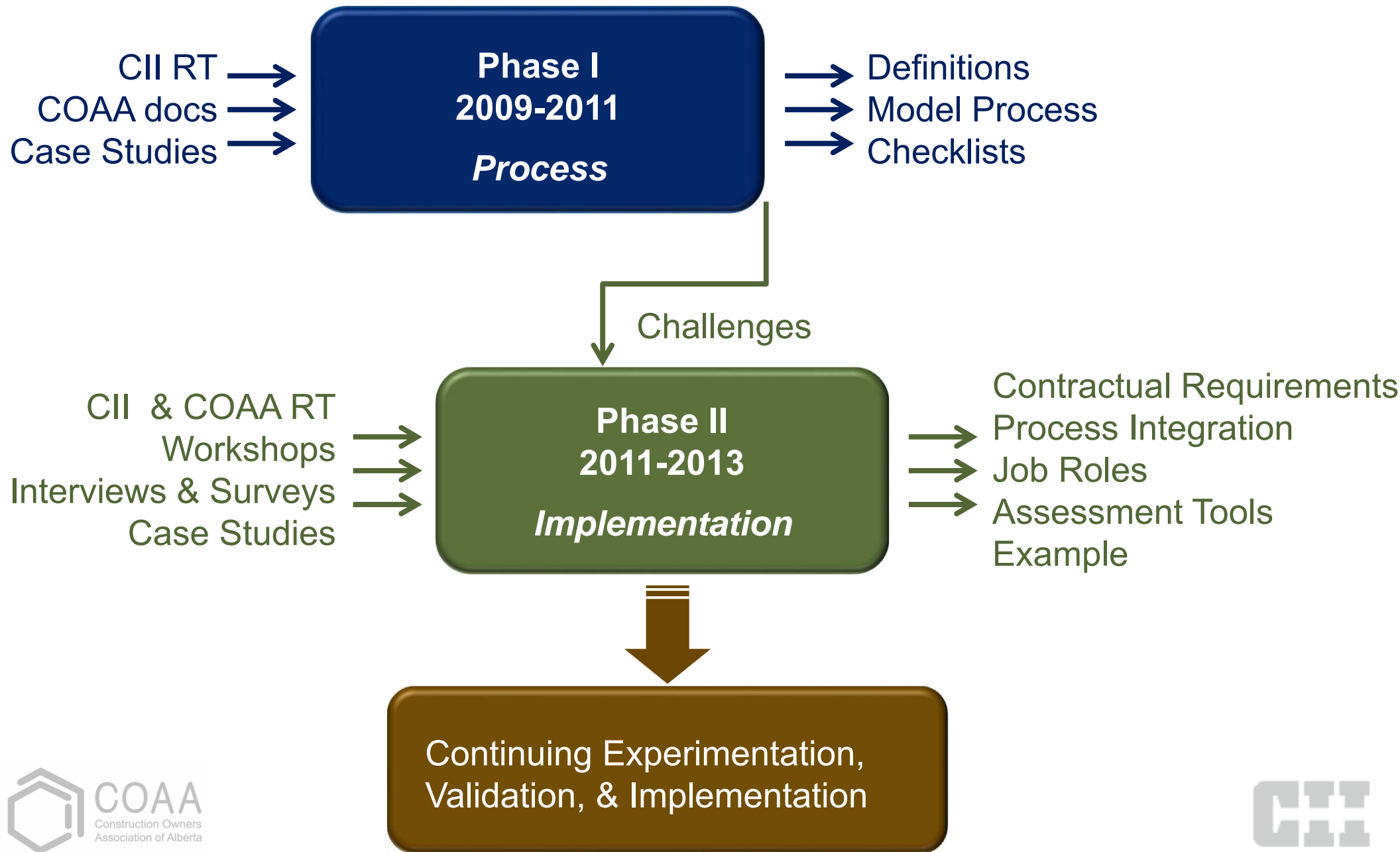
# RECENT ADVANCES

**William O'Brien, PE, PhD**

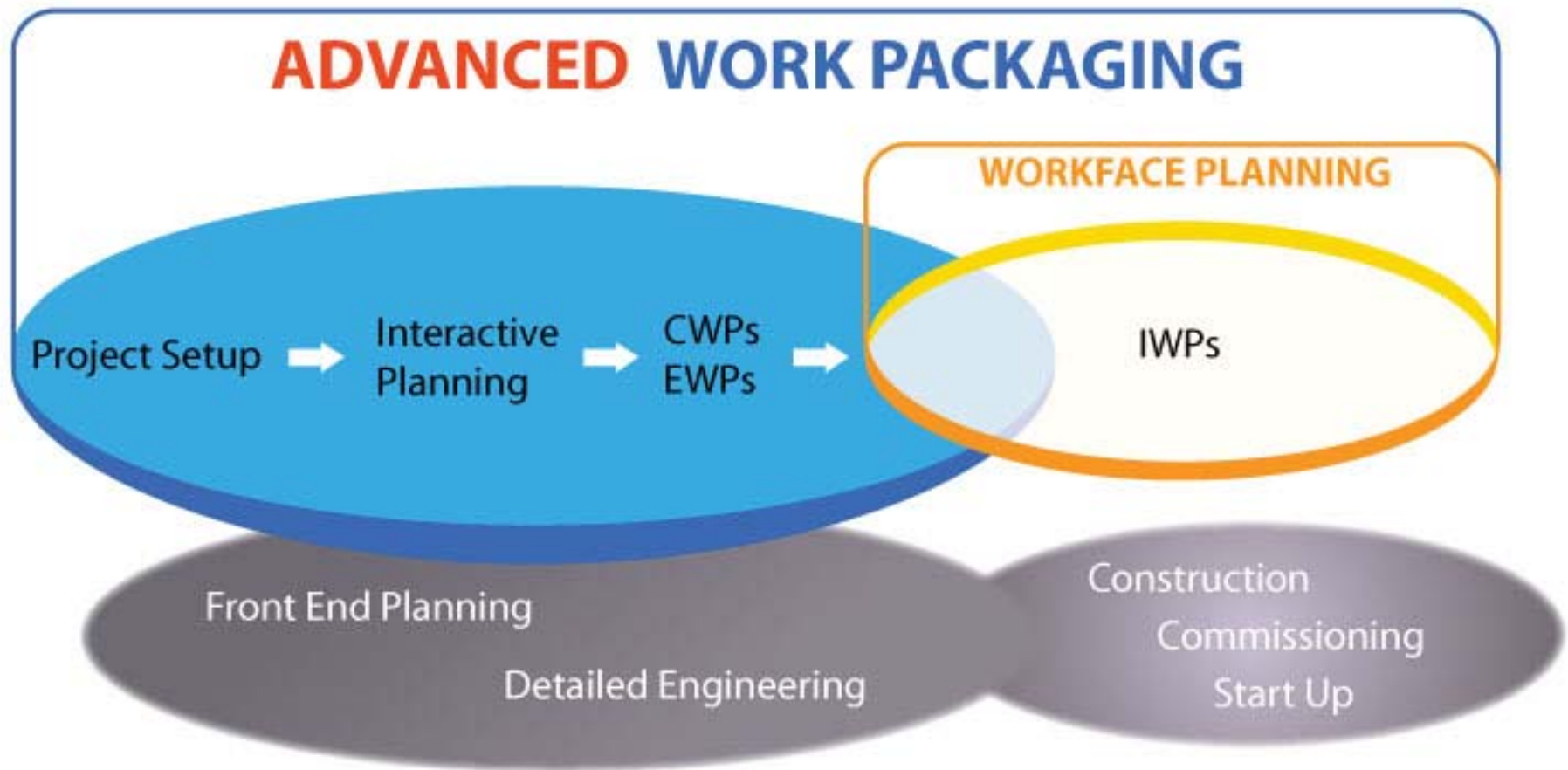
**The University of Texas at Austin**



# How did we get here? CII/COAA Research



# Where we are today:



# So what's really new?

- We **KNOW** Front End Planning helps projects
  - Statistics, logic, case examples
- We also have lots of evidence of poor FEP
  - Too early, not detailed enough, no continuity, not beginning with the end in mind
- AWP is the disciplined extension of FEP processes connecting the across the project lifecycle
  - People, processes, tools
  - Promotes WFP success